



The 2004 Hurricane Season

T.J. Szelistowski

Director

Transmission and Distribution Operations



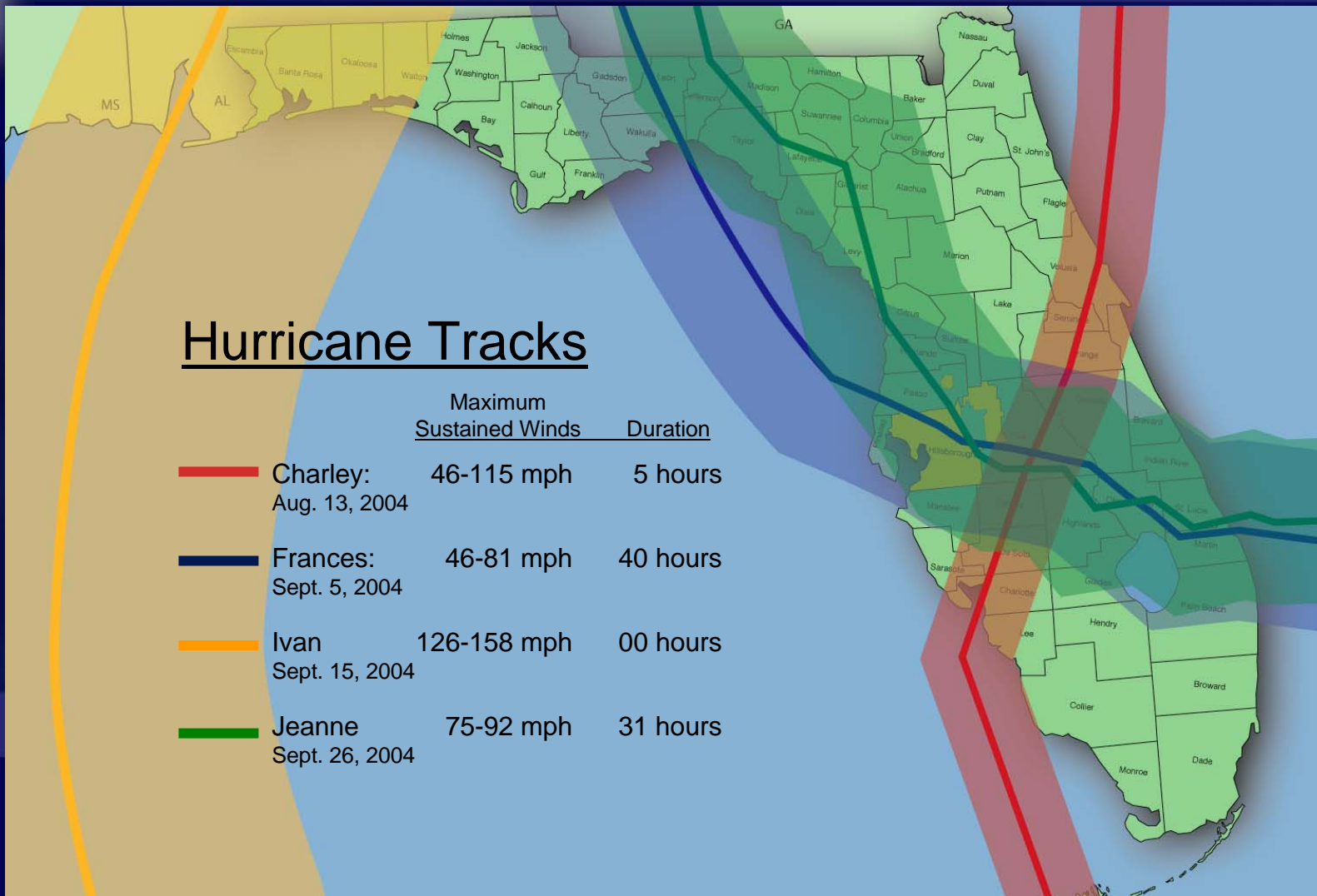
Preparation

- Annual mock storm exercise
- Establish incident bases
- “GET READY” program for workforce

- Monitor weather (hourly basis)
- Establish communications
- Initial material order
- Assess resource requirements and availability
- Logistics support

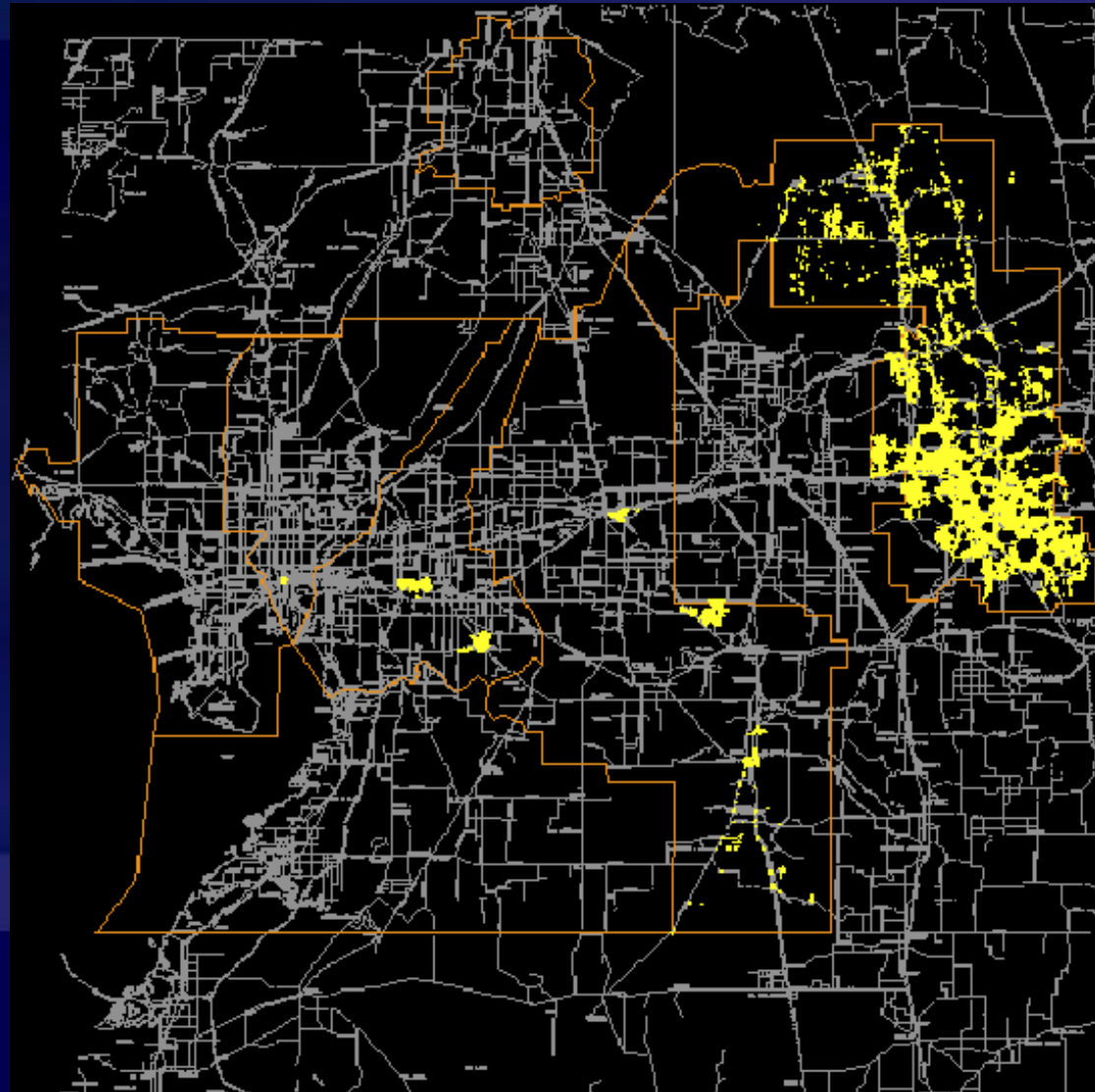


Maximum Sustained Winds & Duration



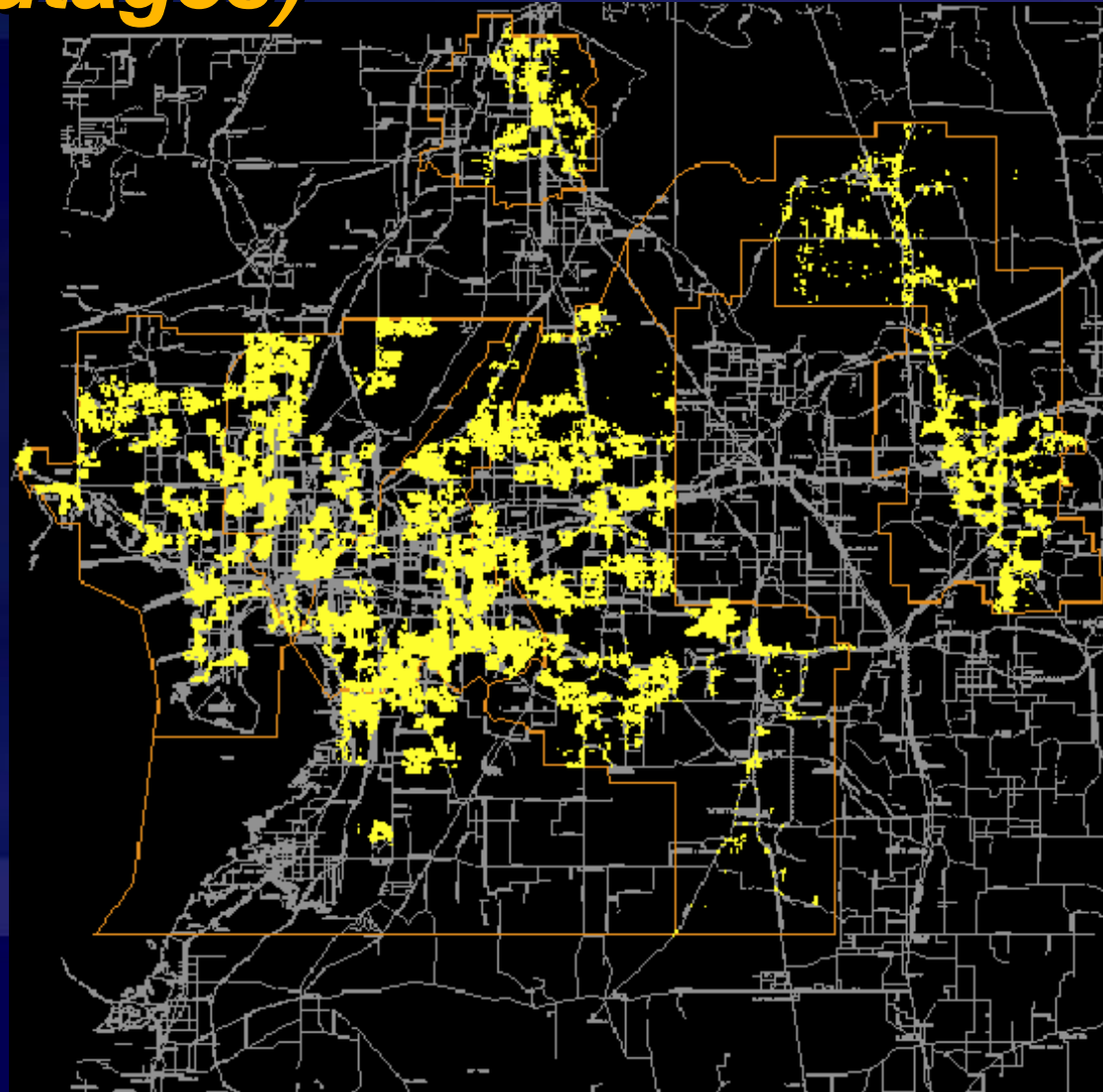


Hurricane Charley (78,000 outages)



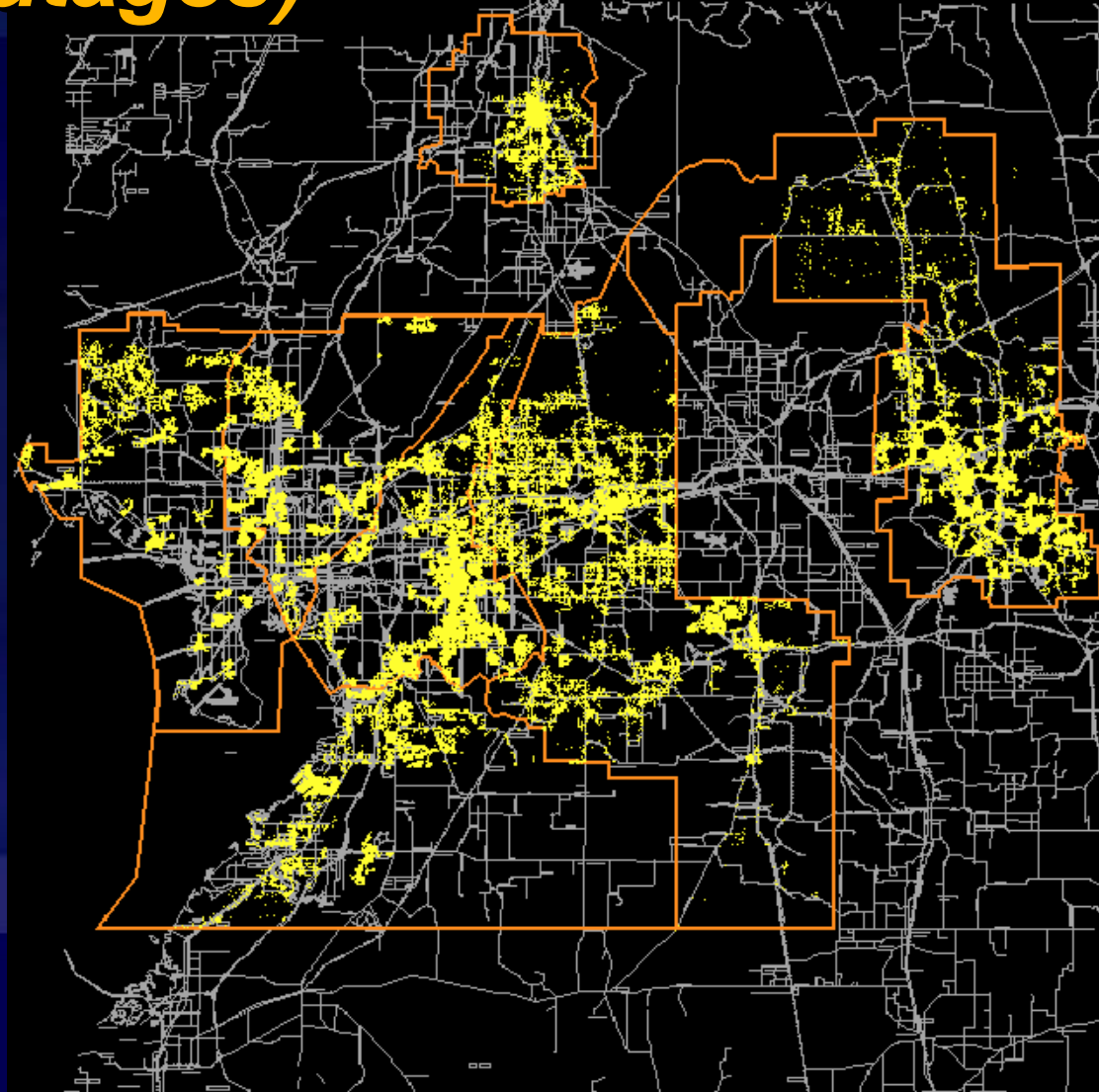


Hurricane Frances (268,000 outages)





Hurricane Jeanne (285,000 outages)





System Impact

	<u>Charley</u>	<u>Frances</u>	<u>Jeanne</u>
<u>Distribution</u>			
Circuits out	68	223	252
Lights out	353	2519	639
Wire down (spans)	2,540	5,780	6,600
<u>Transmission</u>			
Circuits out	17	21	42
Wire down (spans)	74	34	151
<u>Substations</u>			
Distribution out	23	46	70
Transmission out	17	21	42







Restoration

- **Safety**
- **Resources (Internal and External)**
- **Restoration Priority**
- **Community**



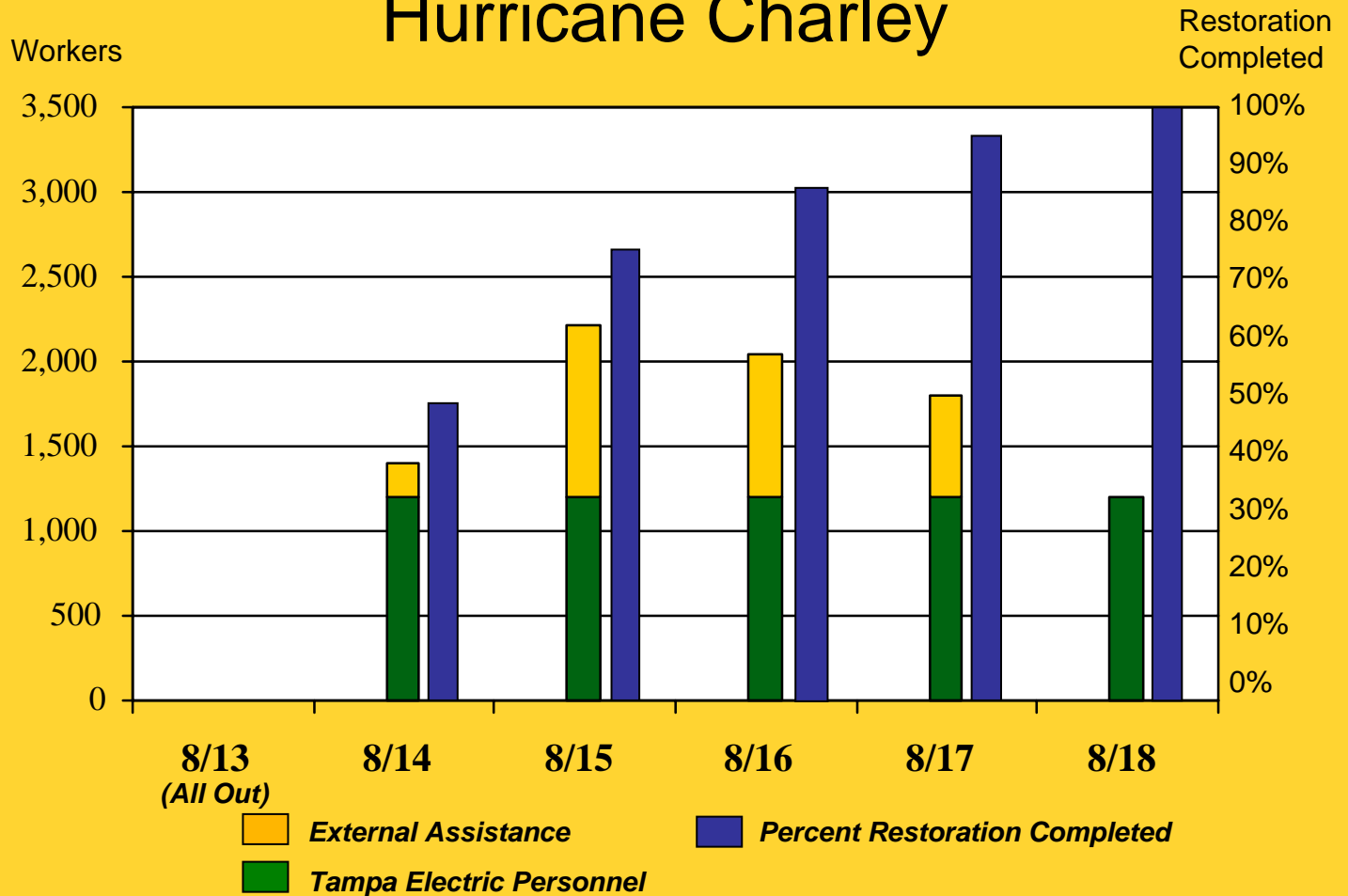
Prioritization Logic

- **Restoration is a fluid and dynamic process**
- **PHASE I: Priority circuits (public health, safety, welfare)**
 - Hospitals
 - Fire and police stations
 - Emergency facilities
 - Public schools
 - Lift stations
- **PHASE II: Customer Maximization Ratio**



Manpower / Restoration

Hurricane Charley

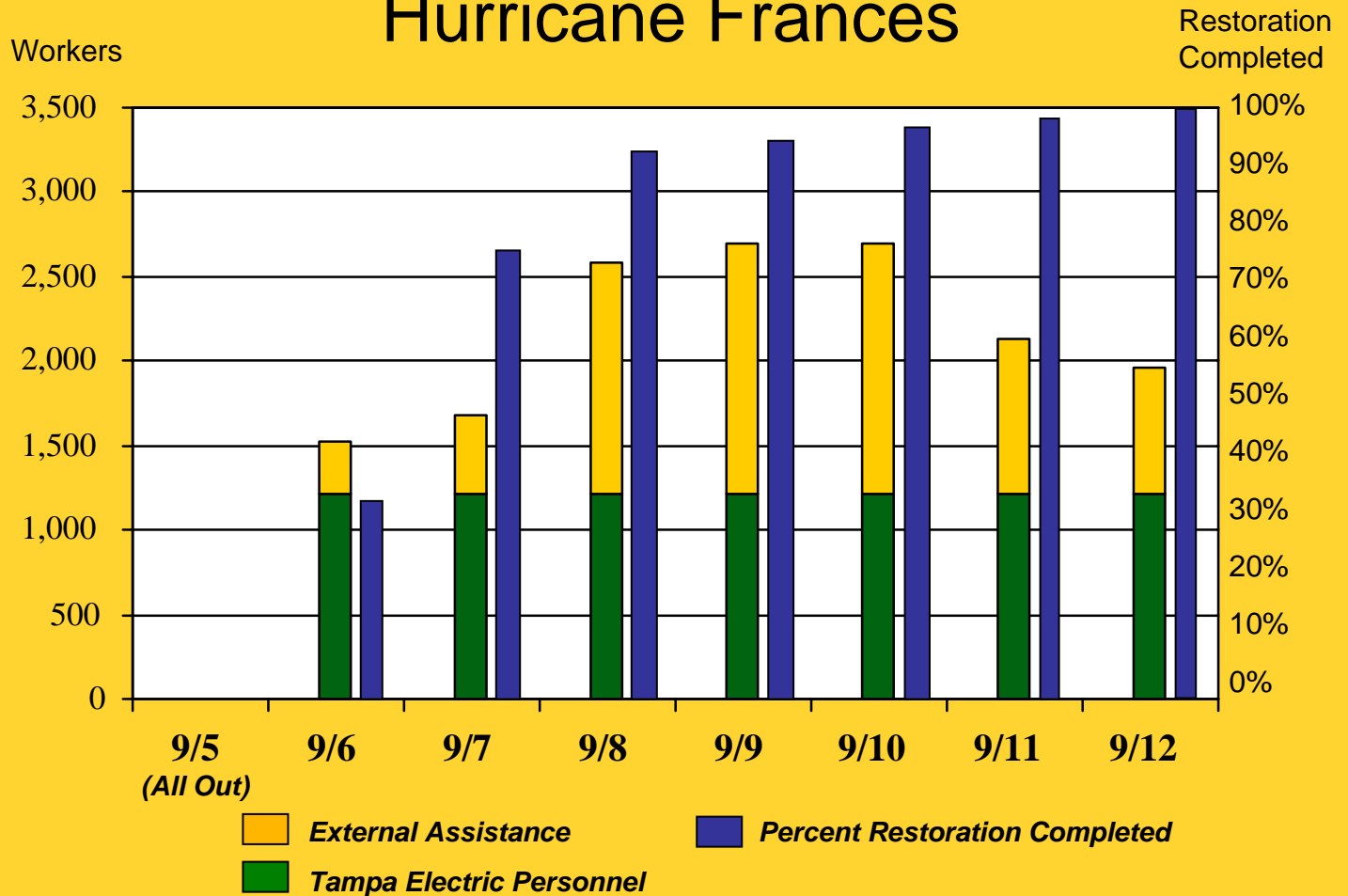


78,000 Outages



Manpower / Restoration

Hurricane Frances

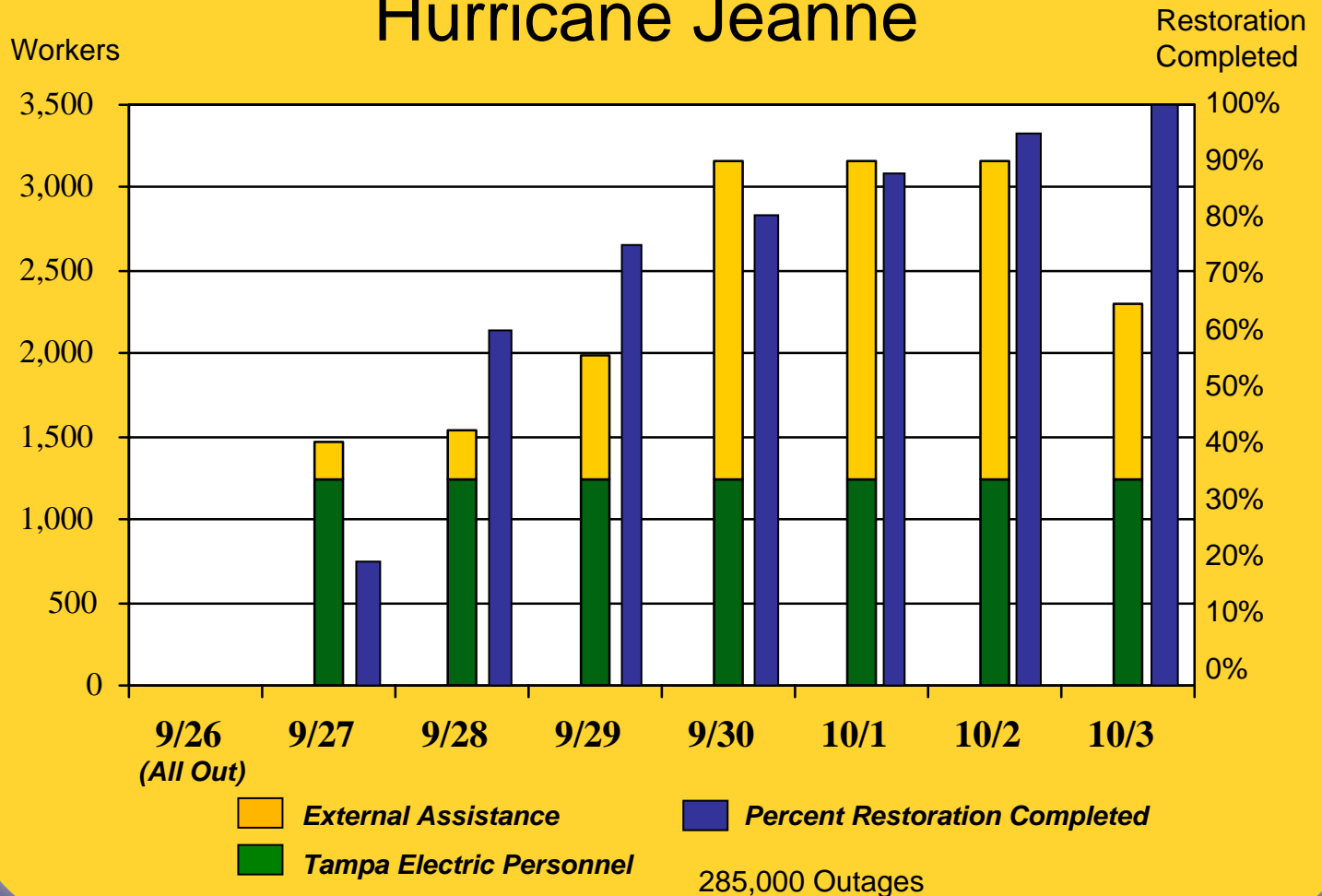


268,000 Outages



Manpower / Restoration

Hurricane Jeanne





Hurricane Restoration Logistics

- **Meals served: 156,991**
- **Lodging: 34,496 beds**
- **Transportation: 30,880 (383 buses)**
- **Laundry: 1,454 bags**
- **Security and safety: 65 guards**
- **Family assistance for team members (i.e. dependent care, pet care and home repair referrals): 36**



In Conclusion